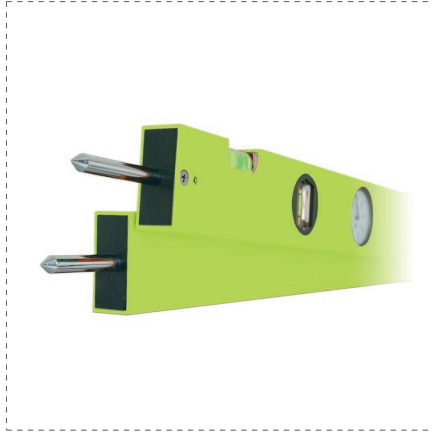


ANGLE MEASUREMENTS

PROTRACTOR WITH DIAL MAGNETIC ALONGSIDE ARMS



DETAILS

- Magnetic base
- Two aluminium interlocking arms working on the same plane with locking screw
- Direct reading in degrees on the front dial gauge
- Range 0-355°, double scale 0°-90° and 90° - 180°
- Two acrylic vials: horizontal and vertical
- Two hardened steel tips (movable) for compass use
- In soft case

ARTICLES OF THE RANGE

| Ref. | Barcode | L | Angle Range | Scale | Quantity |
|-------|---------------|-------|-------------|-------|----------|
| 29915 | 8001066299157 | 60 cm | 0-355° | 1° | 1 |

GALLERY

